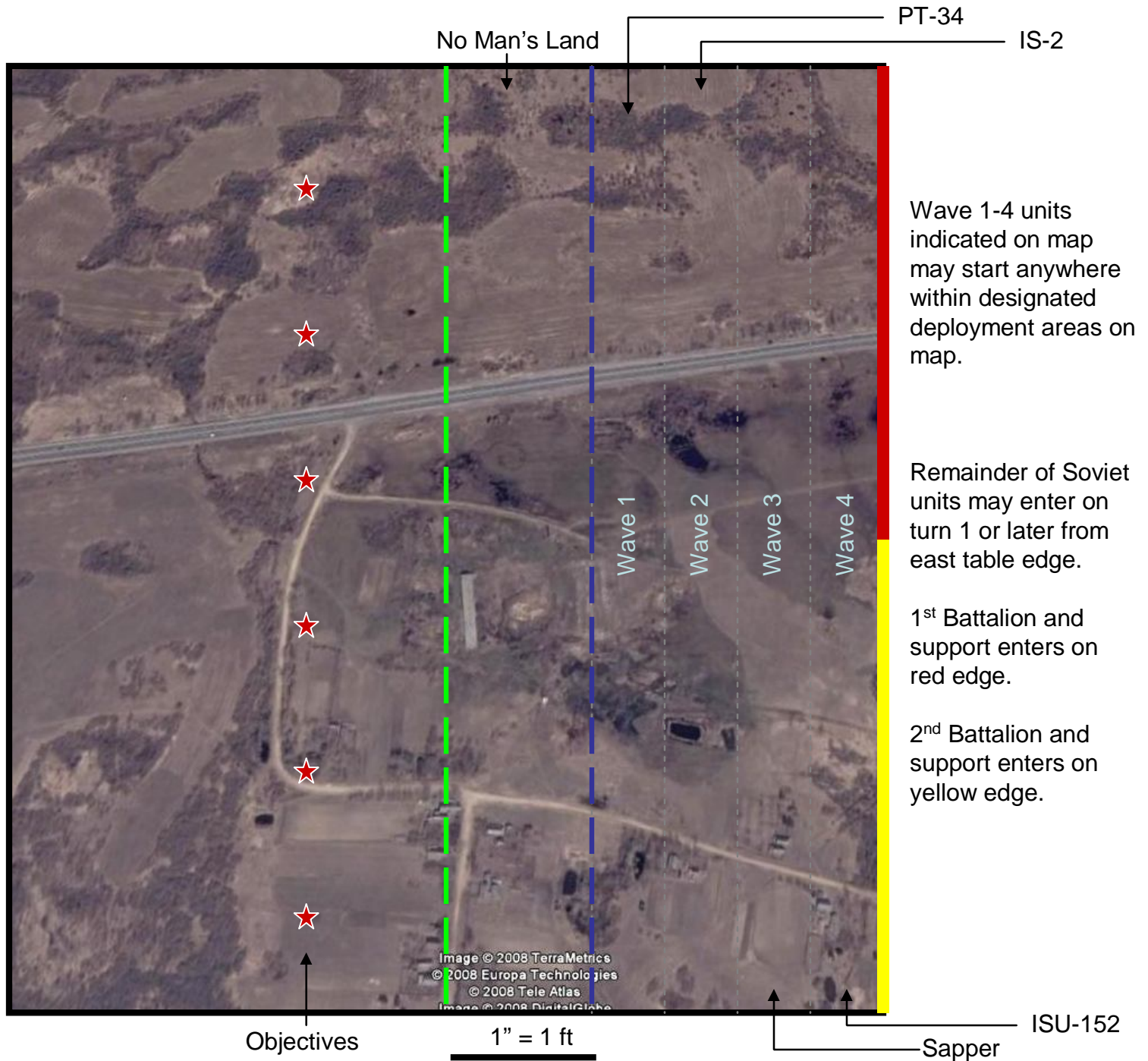




Germans may deploy mines and wire in No man's land. Remaining German fortifications and units deploy west of green line.

German reserves enter anywhere along west edge

German players may reduce any terrain feature in German deployment area or No man's Land to difficult terrain with no LOS block, concealment, or cover



Wave 1-4 units indicated on map may start anywhere within designated deployment areas on map.

Remainder of Soviet units may enter on turn 1 or later from east table edge.

1st Battalion and support enters on red edge.

2nd Battalion and support enters on yellow edge.